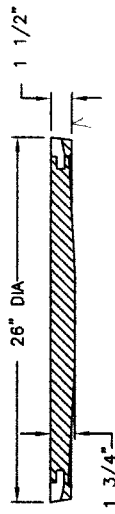
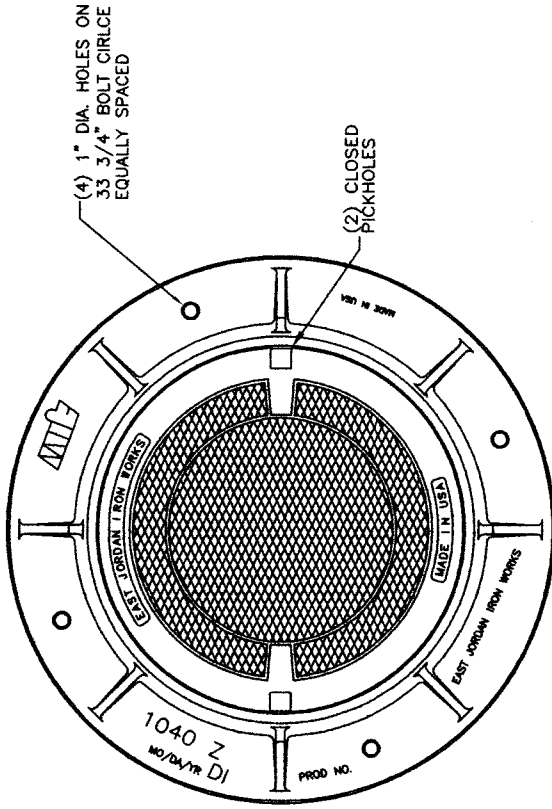


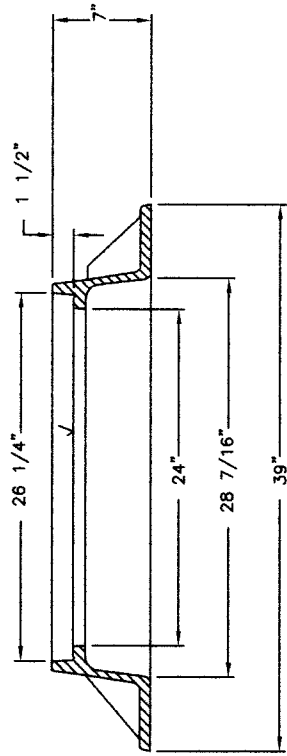
Needs H-35 Air Part Requirements

00190521A01

- MATERIALS**
 COVER-DUCTILE IRON
 ASTM A536
 FRAME-DUCTILE IRON
 ASTM A536
- DESIGN LOAD**
 EXTRA HEAVY DUTY
 (PROOF LOAD TESTED
 TO 200,000 LBS.)
- COATING**
 UNDIPPED
- OPEN AREA**
 N/A
- ✓ DESIGNATES MACHINED SURFACE



COVER SECTION



FRAME SECTION

00104916
 00190521

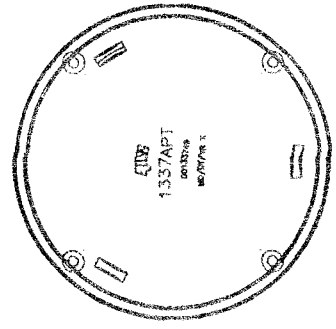
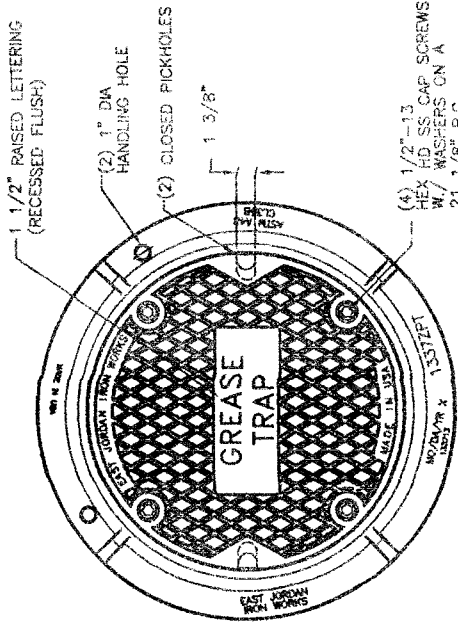
ORIGINAL DRAWING: DEF 10/22/09
 REVISED BY: DEF 05/13/10

CONFIDENTIAL: This drawing is the property of East Jordan Iron Works, Inc., and embodies confidential information, registered marks, trade secret information, and/or know-how that is the property of East Jordan Iron Works, Inc. ©Copyright 2009 East Jordan Iron Works, Inc.

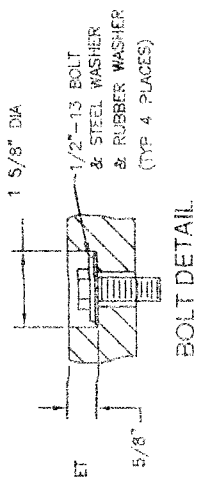
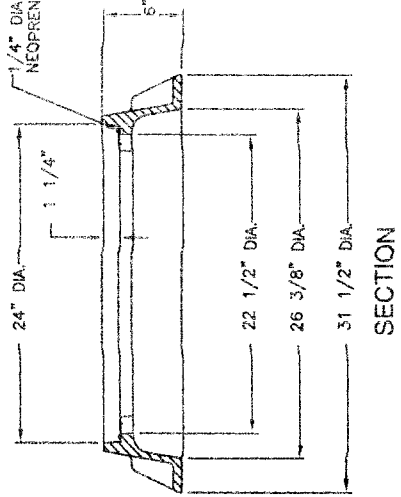
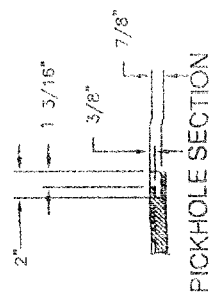
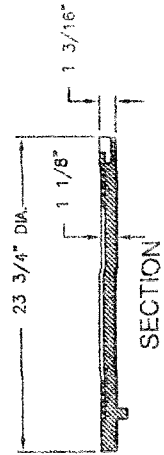
- Weights (lbs./kg.), dimensions (inches/mm.), and drawings provided for your guidance.
- We reserve the right to modify specifications without prior notice.
- Uncontrolled distribution.

1337ZPT/1337APT ASSEMBLY

00133706



(4) 1/2"-13
HEX HD SS CAP SCREWS
W/ WASHERS CN A
21 1/8" B.C.



MATERIALS
COVER-GRAY IRON
ASTM A48 CLASS B
FRAME-GRAY IRON
ASTM A48 CLASS B

DESIGN LOAD
HEAVY DUTY

COATING
UNDIPPED

OPEN AREA
N/A

✓ DESIGNATES MACHINED SURFACE

Call Today for
More Information

500.626.4653
EJIW EAST JORDAN
RECOVER YOUR INFRASTRUCTURE. MADE IN THE USA.

• Weights (lb., kg), dimensions, finishes, and drawings provided for your guidance.
• We reserve the right to modify specifications without notice.
• Unconditional distributor.

CONFIDENTIAL: This drawing is the property of East Jordan Iron Works, Inc. and contains confidential information. Reprints are prohibited. For more information, contact EJIW at 500.626.4653. This drawing is the property of East Jordan Iron Works, Inc. © Copyright 2009. All rights reserved.

00133713
00133749

ORIGINAL DRAWING: DEW 11/05/04
REVISED BY: DEF 01/06/11